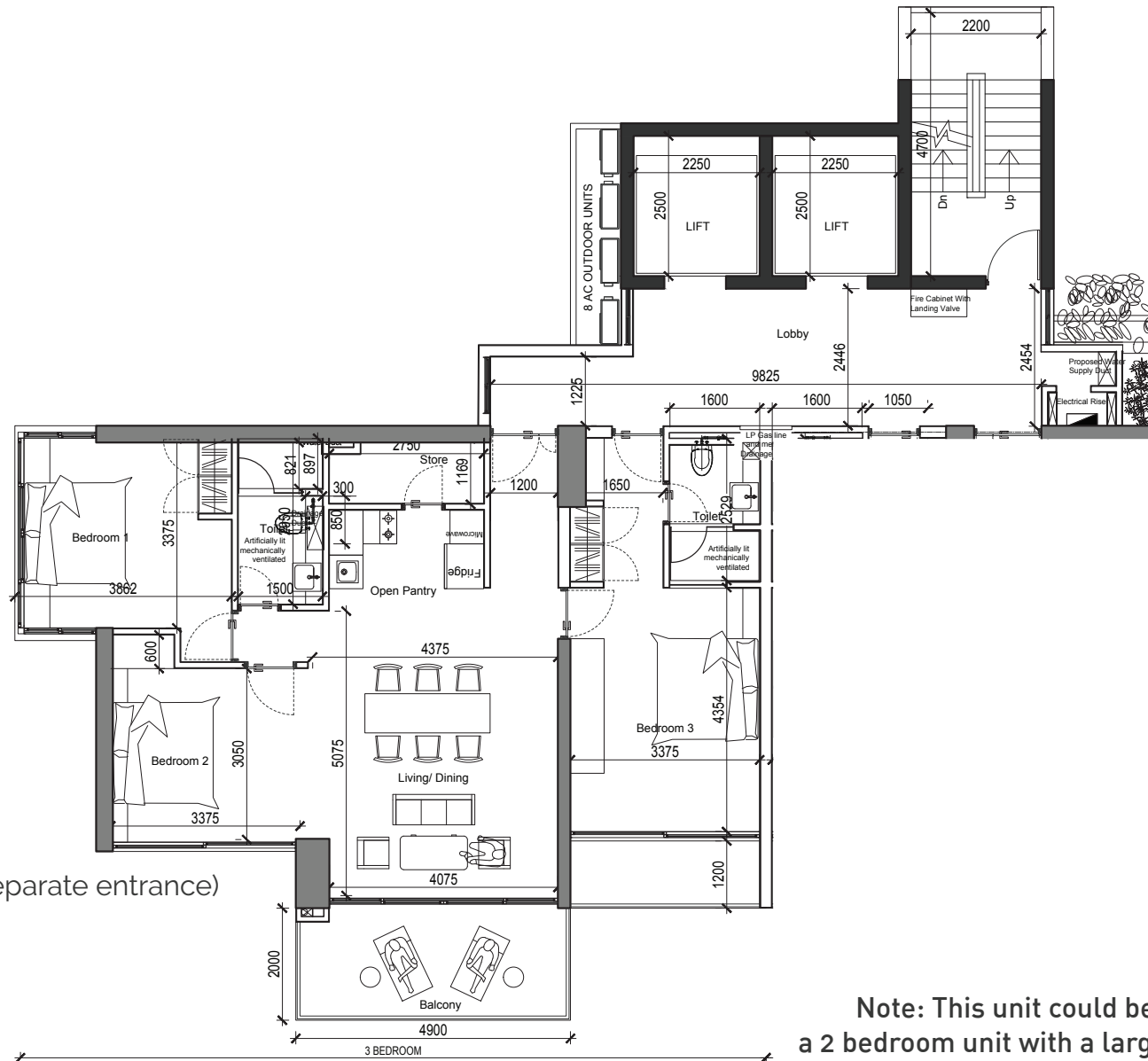
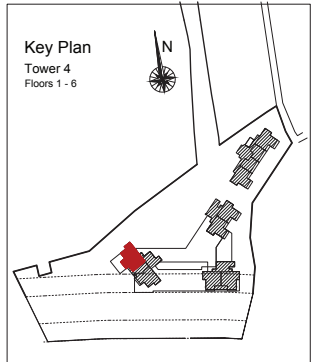


Area: 1182sq.ft (109.82 m2)

- 3 Bedrooms (Master bedroom with separate entrance)
- 2 Bathrooms (En-suite /common)
- Store Room
- Living/Dining
- Open Pantry
- 2 Balconies

Note: This unit could be converted to a 2 bedroom unit with a larger living area if requested by client in the early stages.

Unit D2



Area: 1183sq.ft (109.82 m2)

3 Bedrooms (Master bedroom with separate entrance)

2 Bathrooms (En-suite /common)

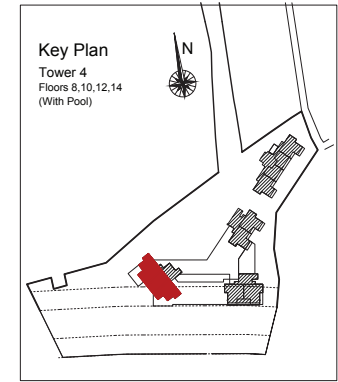
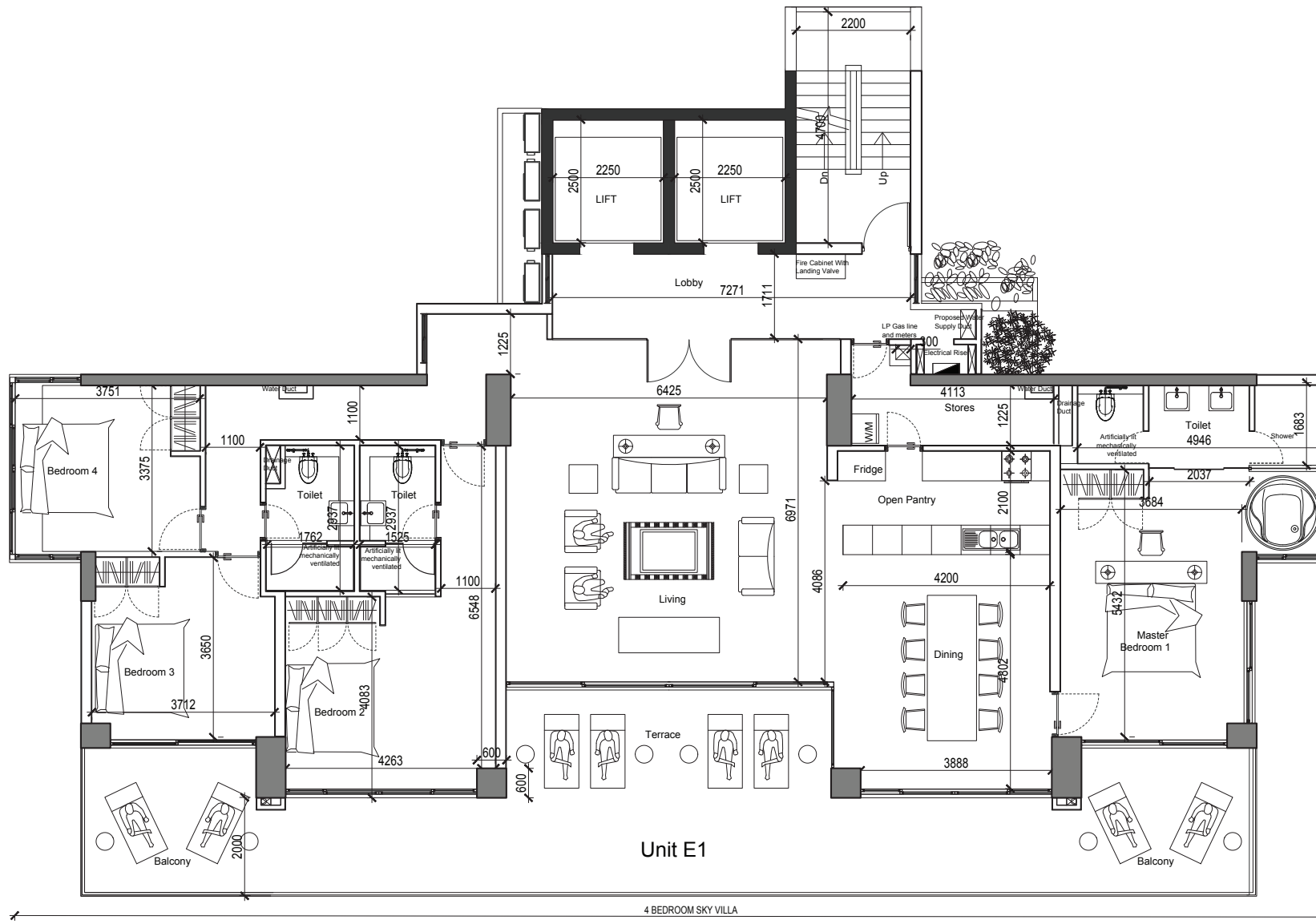
Store Room

Living/Dining

Open Pantry

2 Balconies

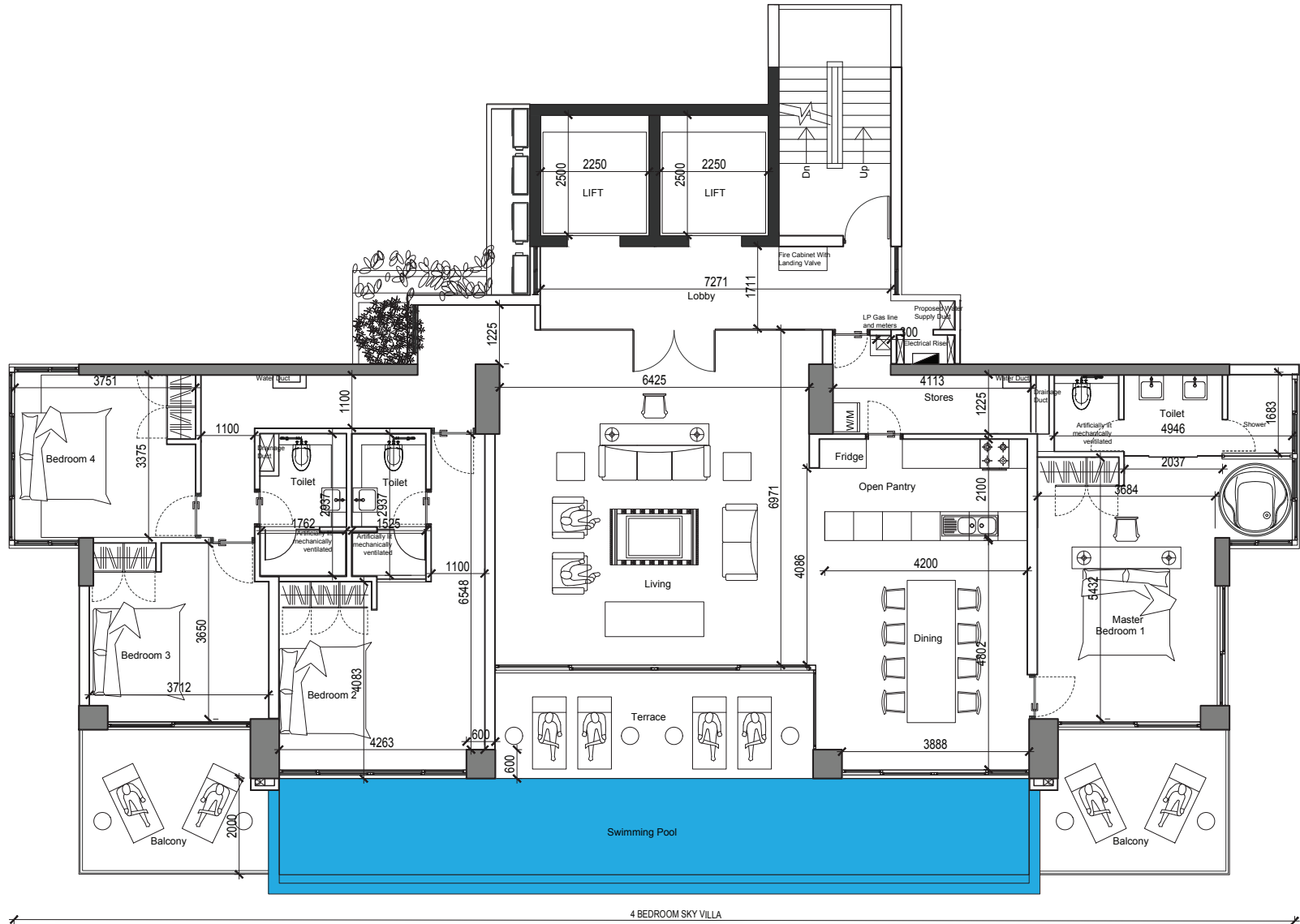
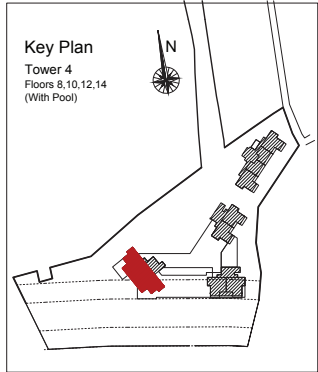
Note: This unit could be converted to a 2 bedroom unit with a larger living area if requested by client in the early stages.



**Area: 3014sq.ft
(279.98 m2)**
 4 Bedrooms
 3 Bathrooms
 (2 En-suite/common)
 Store Room
 Living / Dining
 Open Pantry
 Large Terrace

Tower 4 8th,10th,12th,14th Level

Unit E2 - Four Bedroom Sky villa with pool



**Area: 3014 sq.ft
(279.98 m²)**

- 4 Bedrooms
- 3 Bathrooms
(2 En-suite / common)
- Store Room
- Living / Dining
- Open Pantry
- Swimming Pool & 3 Terraces

Sea